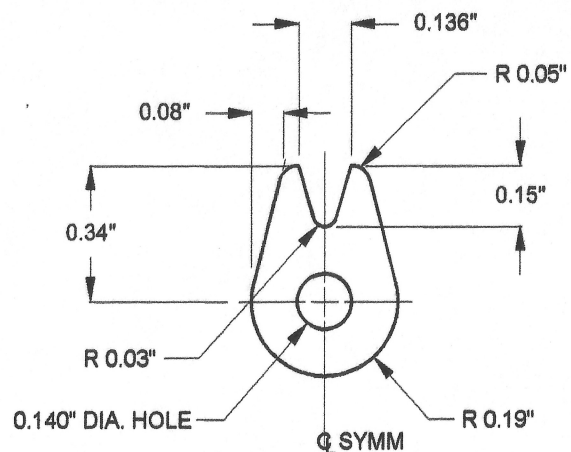
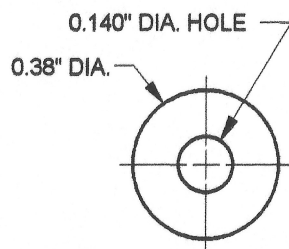


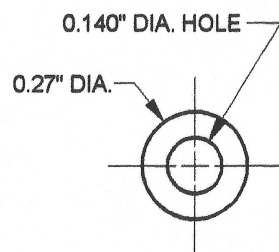
NOTE: THIS DRAWING SHOWS THE INSTALLATION OF A DETHERMALIZER SYSTEM ON THE FLIP GLIDER, BUT IT CAN BE INSTALLED ON ANY SMALL CHUCK GLIDER OR CATAPULT GLIDER HAVING WINGSPANS OF 12" TO 16".



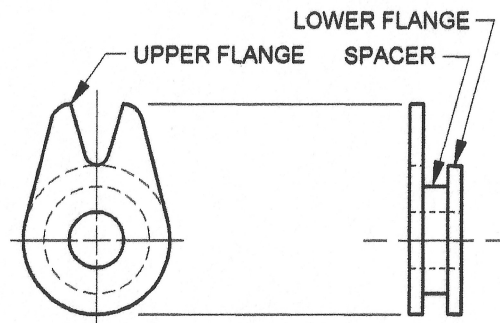
D.T. ARM - UPPER FLANGE
MAKE FROM 1/32" THICK PLYWOOD
SCALE: 2/1



D.T. ARM - LOWER FLANGE
MAKE FROM 1/32" THICK PLYWOOD
SCALE: 2/1

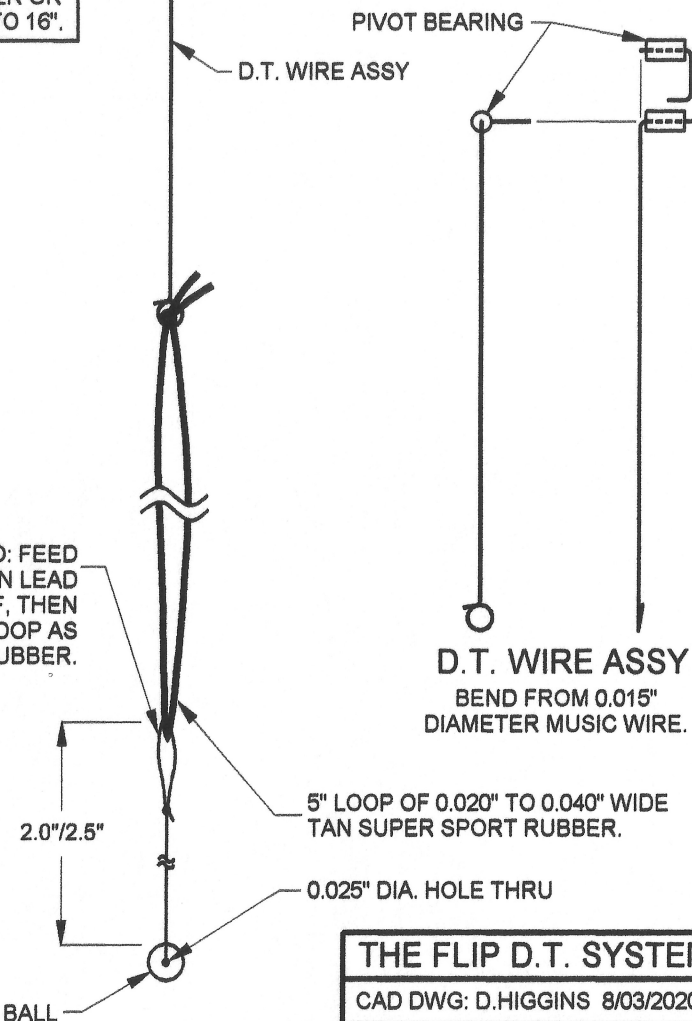


D.T. ARM - SPACER
MAKE FROM 1/16" THICK PLYWOOD
SCALE: 2/1



D.T. ARM ASSY
GLUE UPPER FLANGE, SPACER AND LOWER FLANGE TOGETHER USING NO. 28 DRILL BIT TO ALIGN PARTS.
SCALE: 2/1

NYLON THREAD: FEED THROUGH HOLE IN LEAD BALL AND TIE OFF, THEN MAKE A SMALL LOOP AS SHOWN FOR THE RUBBER.



THE FLIP D.T. SYSTEM

CAD DWG: D.HIGGINS 8/03/2020

SCALE: FULL & NOTED PG. 1 OF 1

REV. B 10/11/2020
REV. A 10/10/2020